

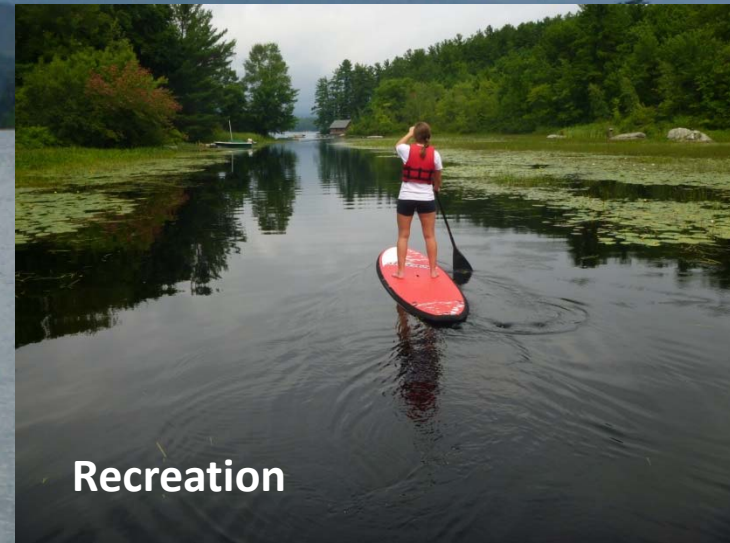


Milfoil Management in the Squam Lakes: *Tentative Success in a 15 Year Battle*



Rebecca Hanson
Director of Conservation

Squam Lakes Association



Variable milfoil





Milfoil Management



Milfoil Management



Costs of Milfoil Management

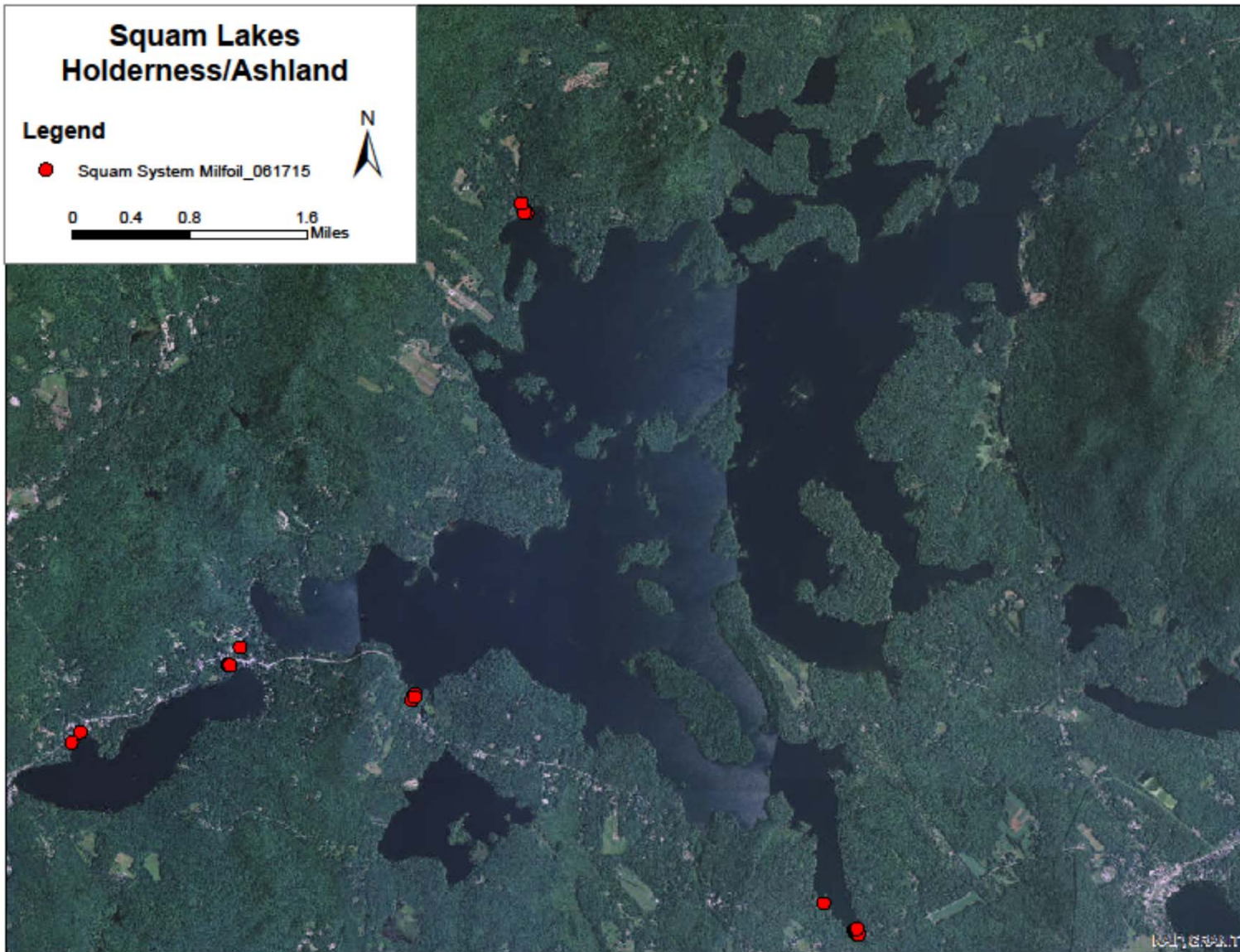


Squam Lakes Holderness/Ashland

Legend

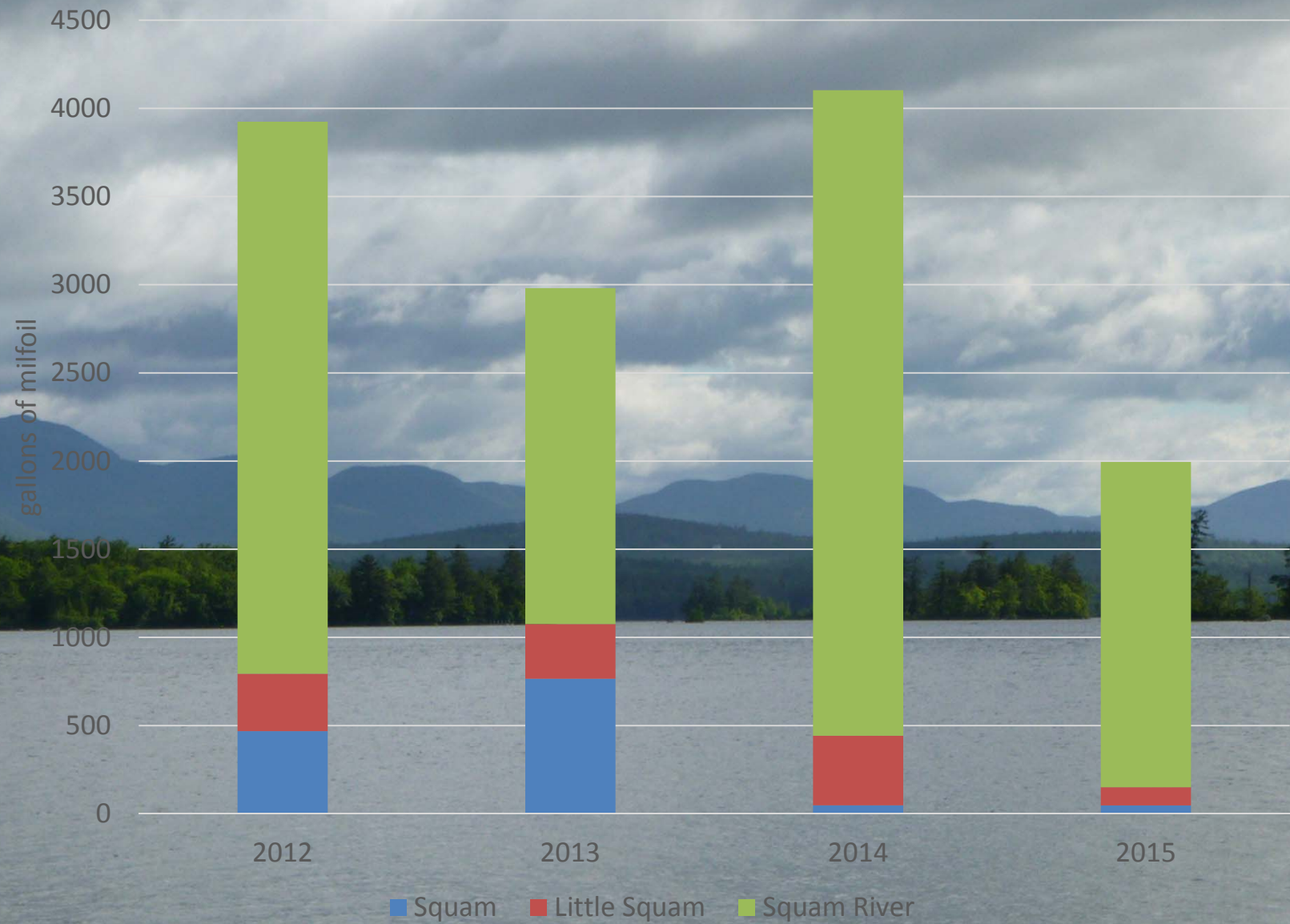
● Squam System Milfoil_081715

0 0.4 0.8 1.6
Miles

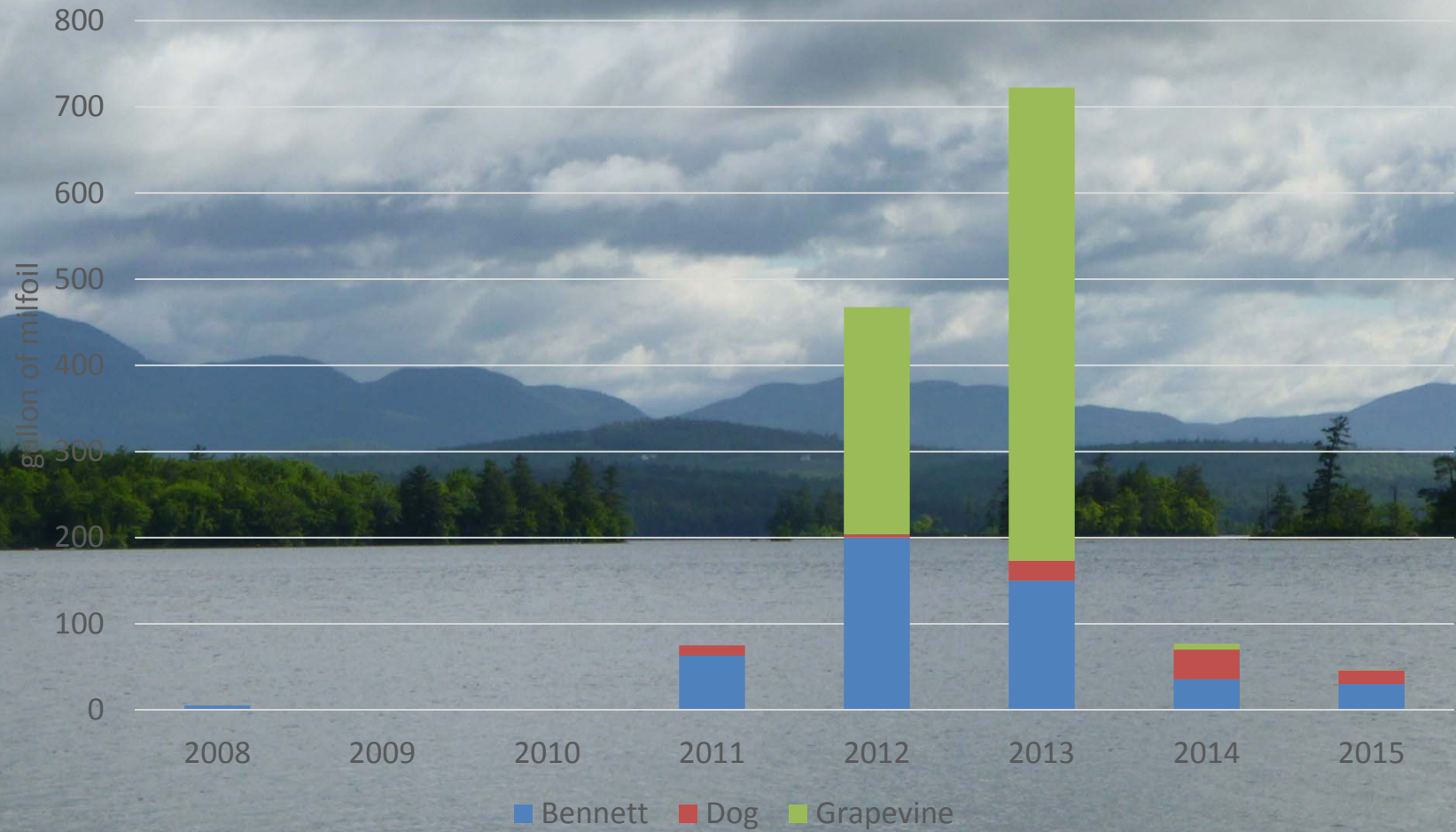


NOV 2011

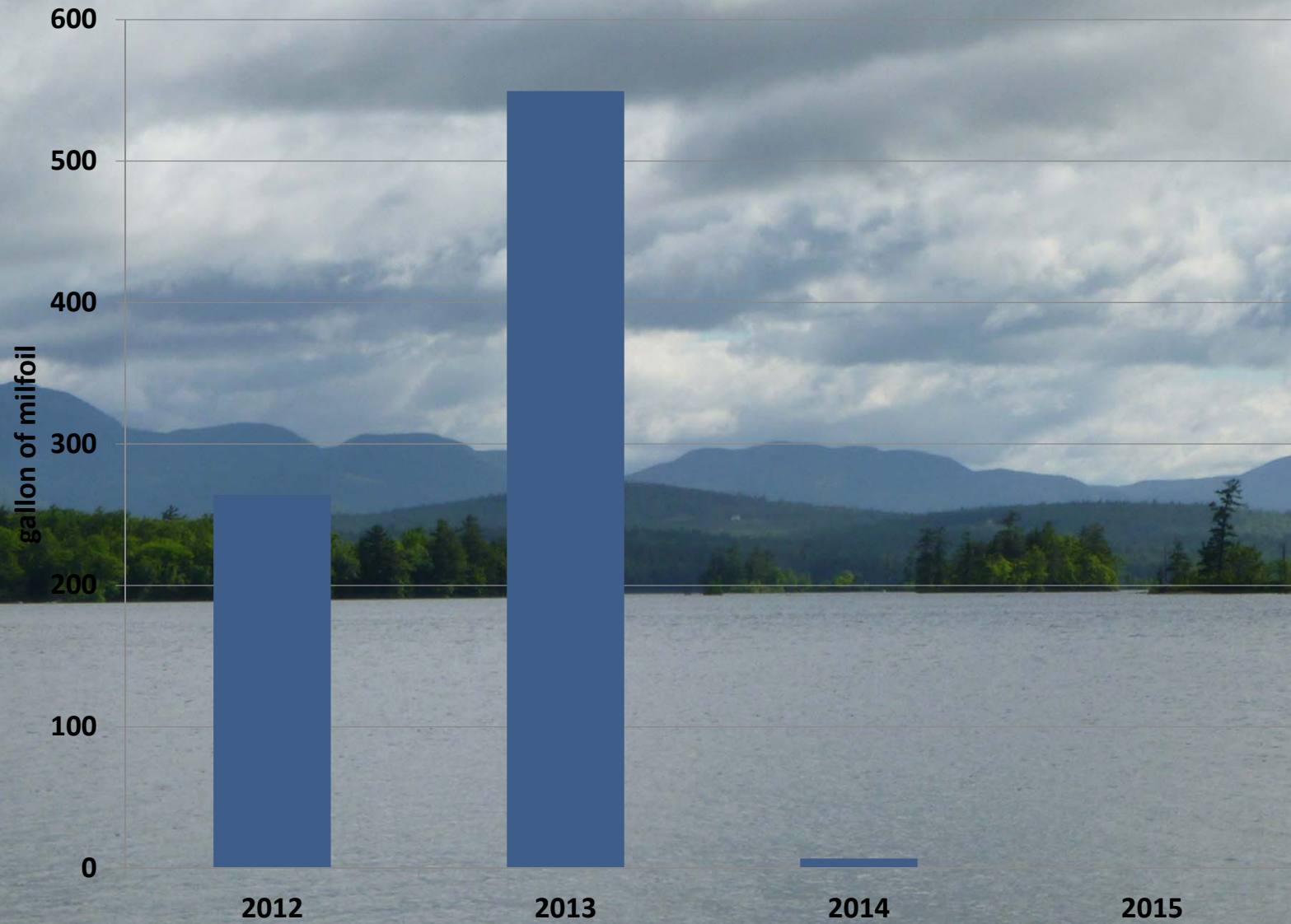
Squam Lakes Milfoil Management, 2012-2015



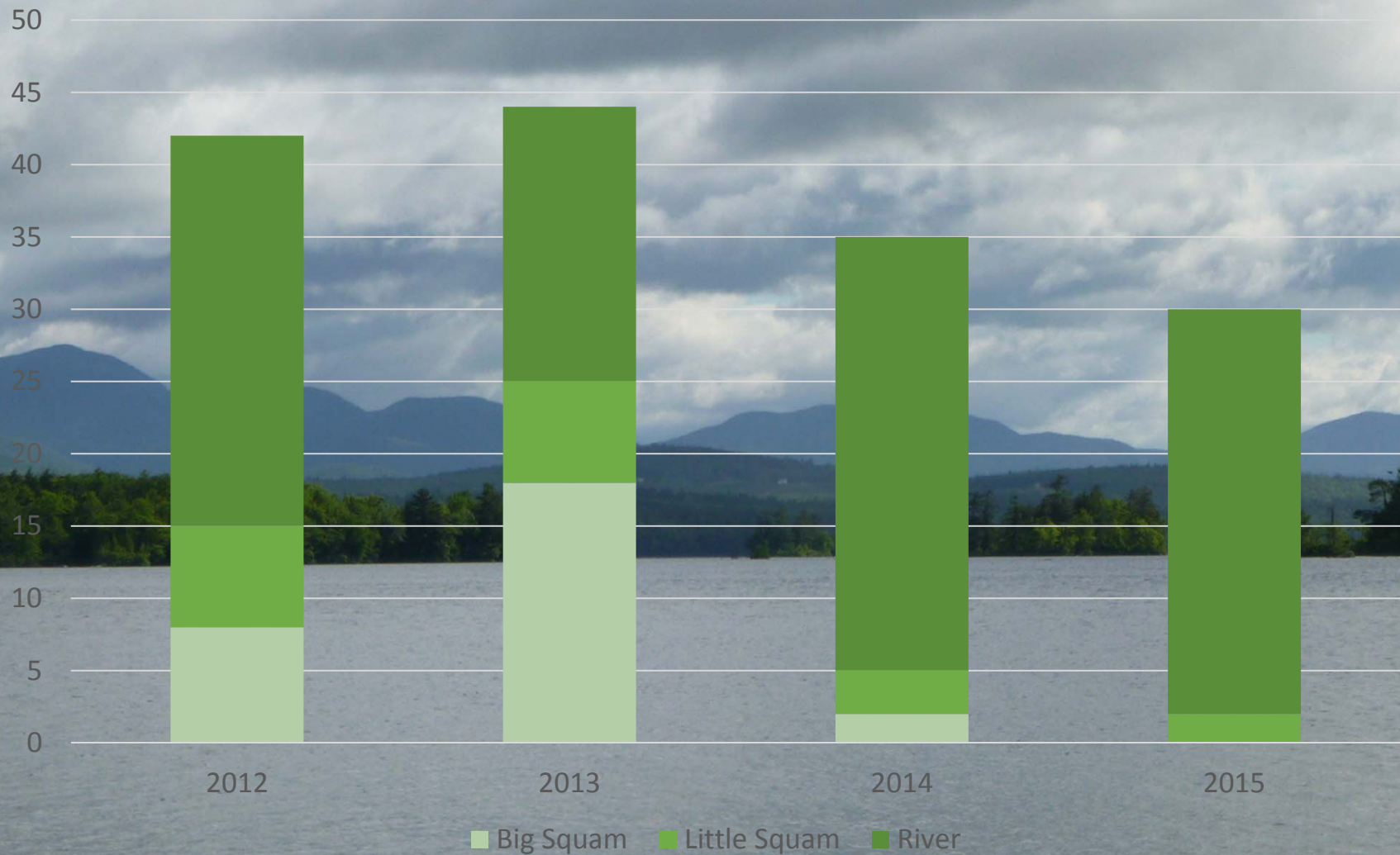
Milfoil Management on Big Squam 2008-2015



Milfoil in Grapevine Cove, 2012-2015



Use of the SLA DASH system



Asquam Marina

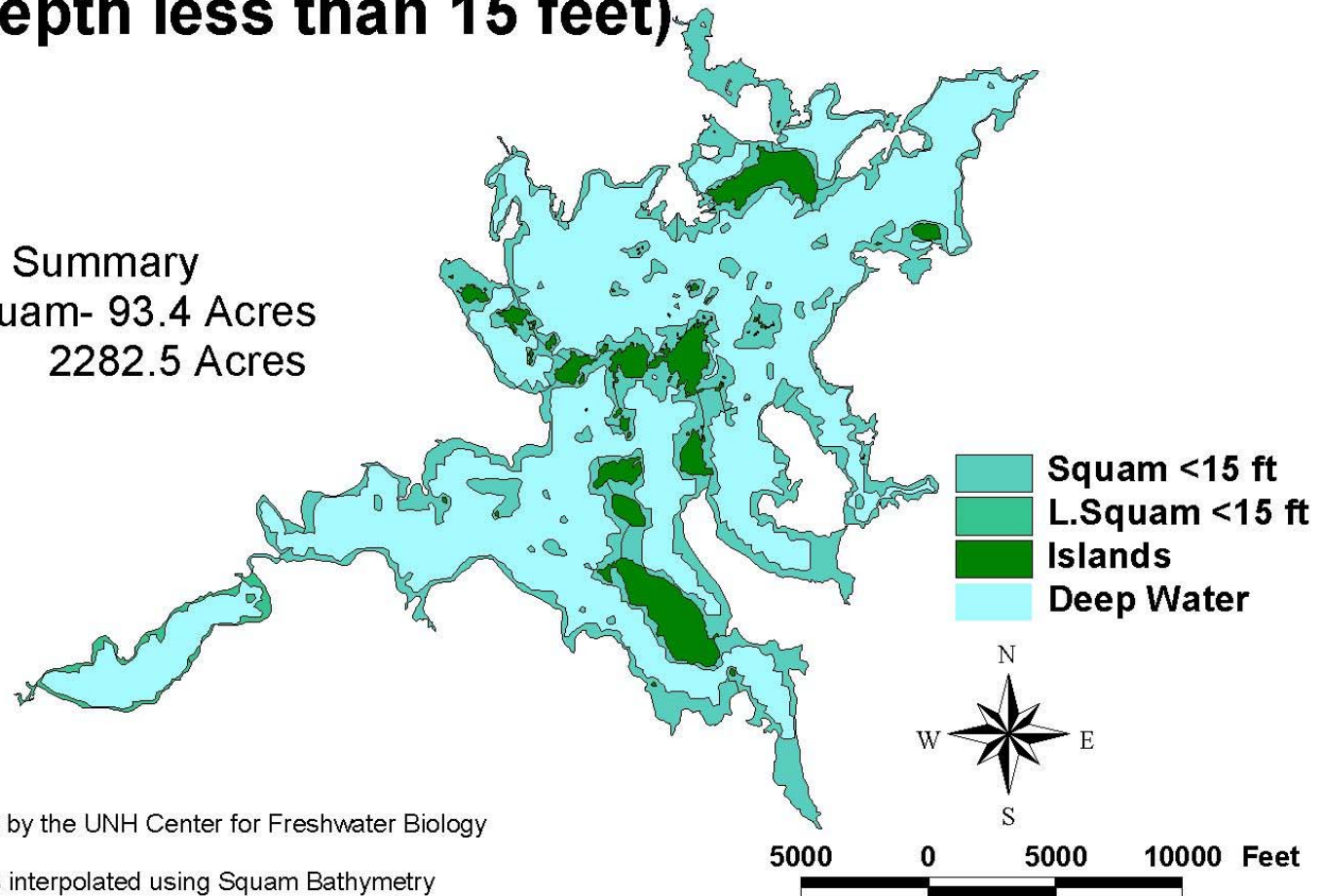


Tentative Success?



Potential Exotic Milfoil Habitat Map Squam Lakes NH (Depth less than 15 feet)

Analysis Summary
Little Squam- 93.4 Acres
Squam 2282.5 Acres



Created 12/6/02 by the UNH Center for Freshwater Biology

Estimations interpolated using Squam Bathymetry data digitized from soundings on Squam Lake Map created by the Boston Museum of Science (Washburn) Assumes average MHW level.



UNIVERSITY of NEW HAMPSHIRE
COOPERATIVE EXTENSION

What's Next?



Acknowledgements

- SLA Members
- Weed Watchers
- Lake Hosts
- NH Department of Environmental Services
- SLA staff—Ecological Interns and Squam Conservation Interns

The Squam Conservation Internship

Training the Next Generation of Conservation Professionals



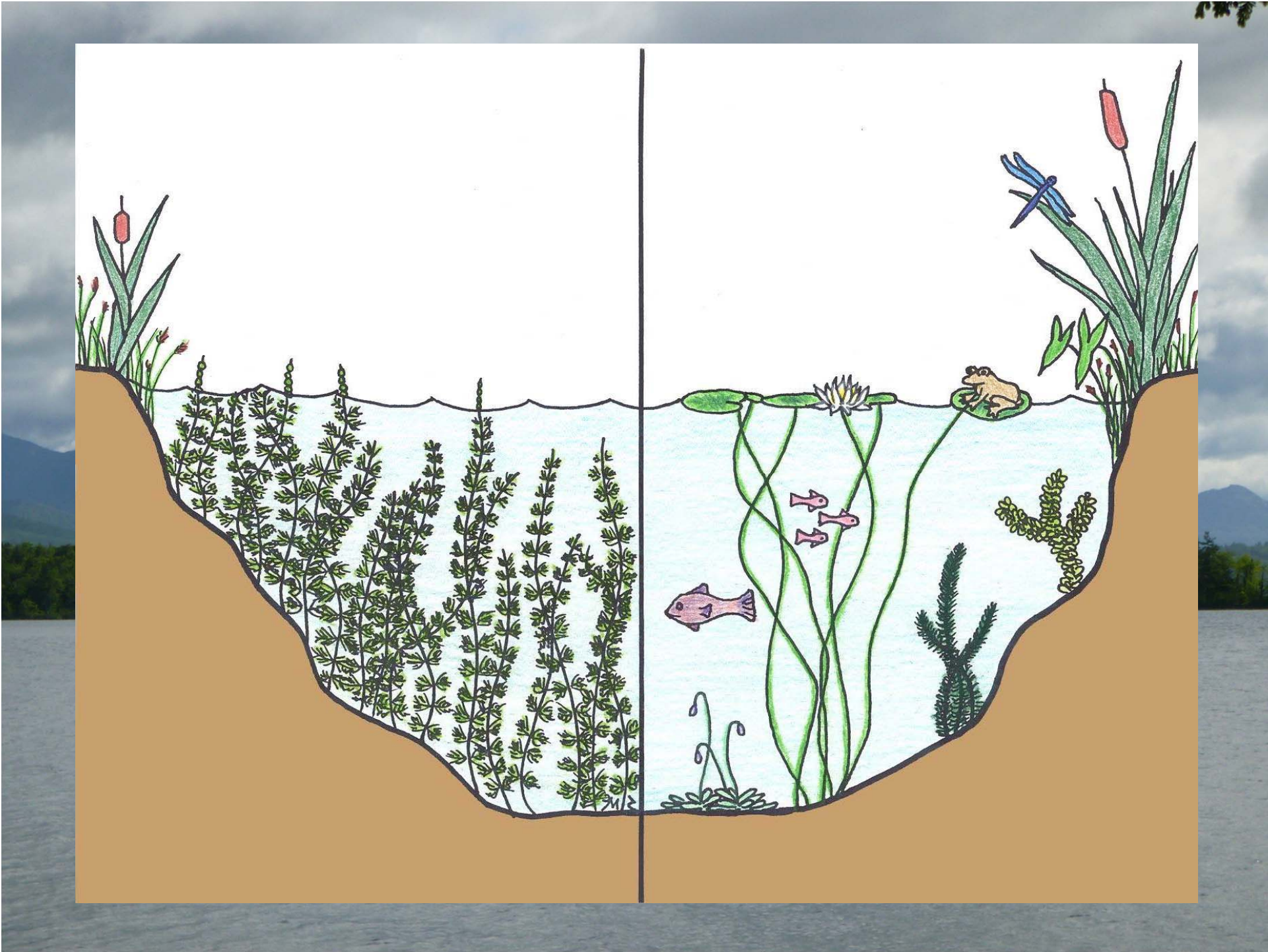
Squamlakes.org/sci



Rebecca Hanson
Director of Conservation
rebeccahanson@squamlakes.org









Season	Staff Hours	Milfoil Removed (gallons)
2008	284	284
2009	339	412
2010	758	3294
2011	461	2621
2012	723	3625
2013	958	2980
2014	1278	4325
2015	1254	1995
Totals	6054	19535

Asquam Marina

