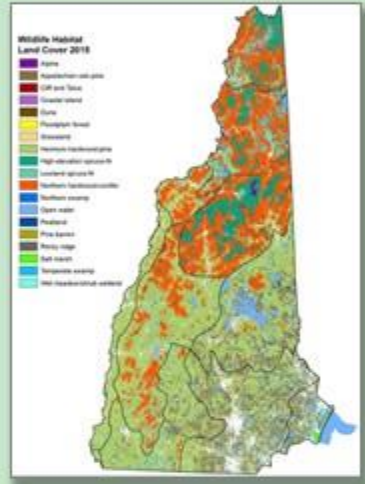
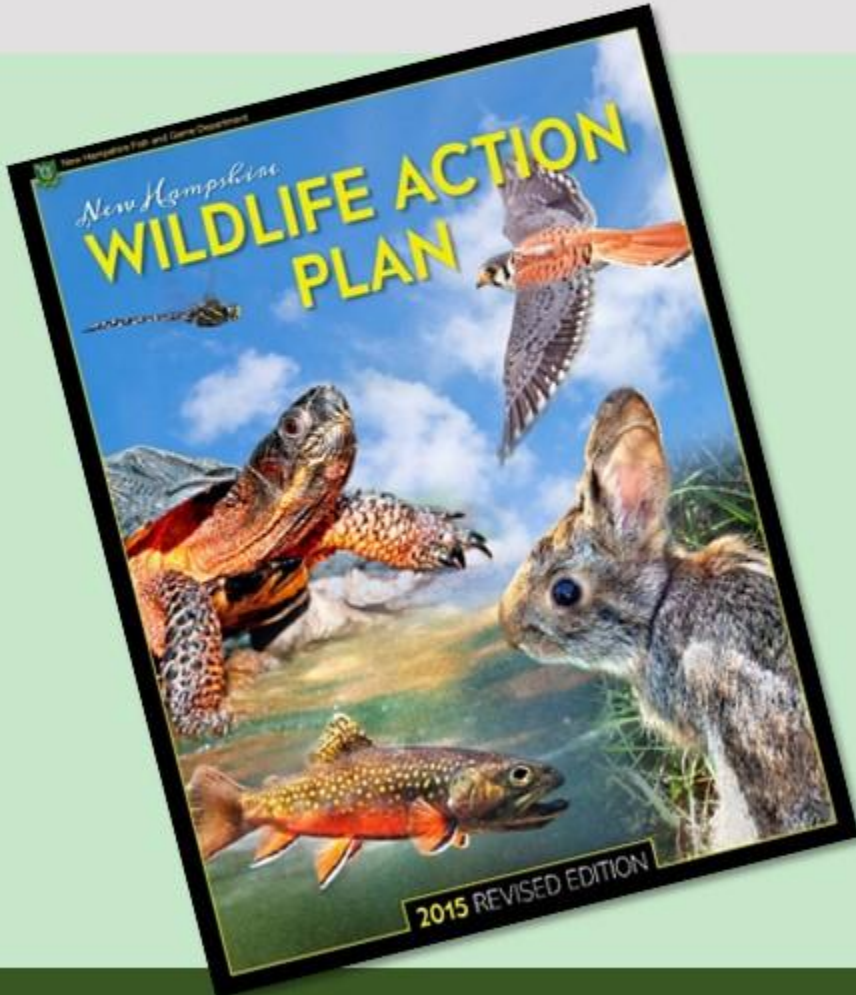


Data, Maps, Action!



What is the Wildlife Action Plan?

Restore rare wildlife and habitats.

Keep common species common.



2015 Revision: Partners in Conservation Science

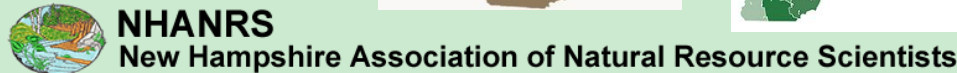
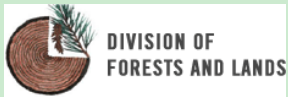


NEW HAMPSHIRE
NATURAL HERITAGE BUREAU



University of
New Hampshire
Cooperative Extension

North Atlantic Landscape Conservation Cooperative



TAKINGACTIONFORWILDLIFE.ORG

2015 Revision

Data

169 Species



27 Habitats



Maps



Action

2015 Revision

Threats

- Pollution
 - Waste water
 - Pollutants
- Climate Change
 - Habitat shifting
 - Drought, extreme temps
 - Storms & flooding
- Natural System Modifications
 - Dams & water management/use
- Invasive and problematic species, genes, & diseases
- Development



Species Profiles

Blanding's Turtle



Alewife Floater



Banded Sunfish

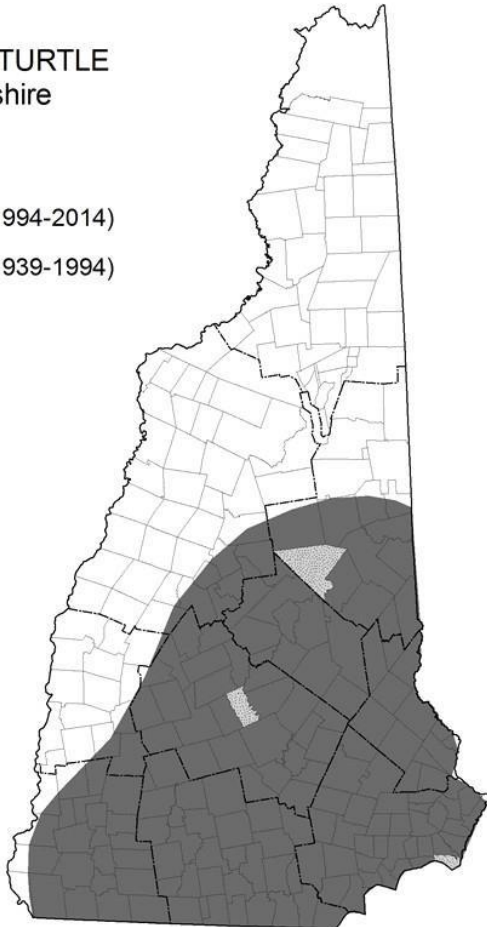


Species Profiles

Habitats & Distribution

Distribution of
BLANDING'S TURTLE
in New Hampshire

■ Current (1994-2014)
■ Historic (1939-1994)



- Marsh & Shrub Wetlands
- Vernal Pools
- Floodplain habitats
- Peatlands
- Temperate Swamps

Species Profiles

Threats

Mortality of individuals from vehicles on roadways

Habitat conversion and mortality from the removal of beaver and human-made dams



Species Profiles

Actions



Encourage alternatives to dewatering wetlands potentially occupied by Blanding's turtles.



Protect important habitat features along the shorelines of lakes, ponds, and larger rivers.



Direct swimming and fishing access points away from mussel beds

<http://NHWildlifeSightings.unh.edu>

<http://NHWildlifeSightings.unh.edu/mobile>

New Hampshire Fish & Game Department



New Hampshire
Wildlife Sightings 



Home Species of Interest Related Links Contact Us Login



Blandings turtle (Emydoidea blandingii)

1 2 3 4 5 6 7 Previous Next Pause

Tell us what you've seen!

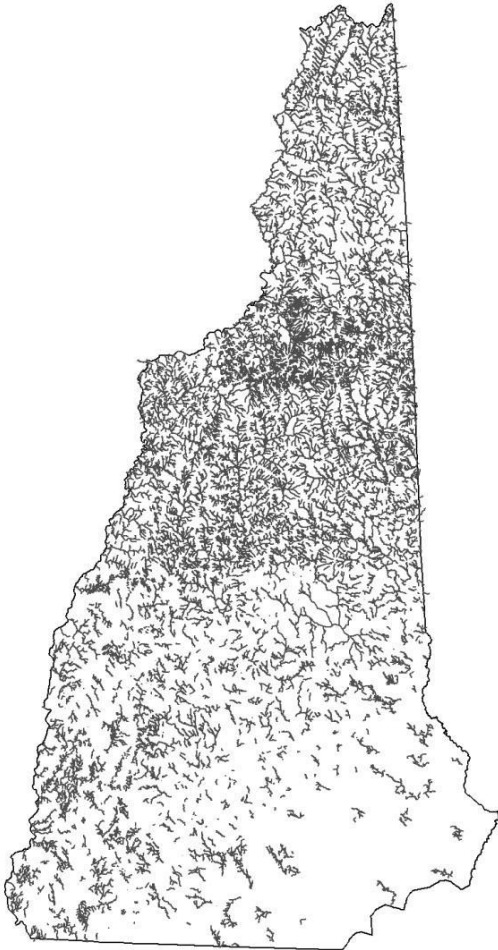
WELCOME to NH Wildlife Sightings, a web tool for reporting wildlife observations in New Hampshire.

It's for everyone — landowners, foresters, outdoor sportspeople, wildlife enthusiasts... And it's easy!

- Begin by creating your own **user account**...
- **Learn** how to use the reporting tools
- Review our wildlife **species of interest**
- **Visit links** of related information.

Habitat Profiles

Coldwater Rivers and Streams



Habitat Profiles

Threats



- **Habitat degradation due to:**
 - **Stream crossings**
 - **Point source pollution**
 - **Agricultural run-off**
 - **Acid deposition**
 - **Increased flood damage**
 - **Impervious surfaces & storm water run-off**

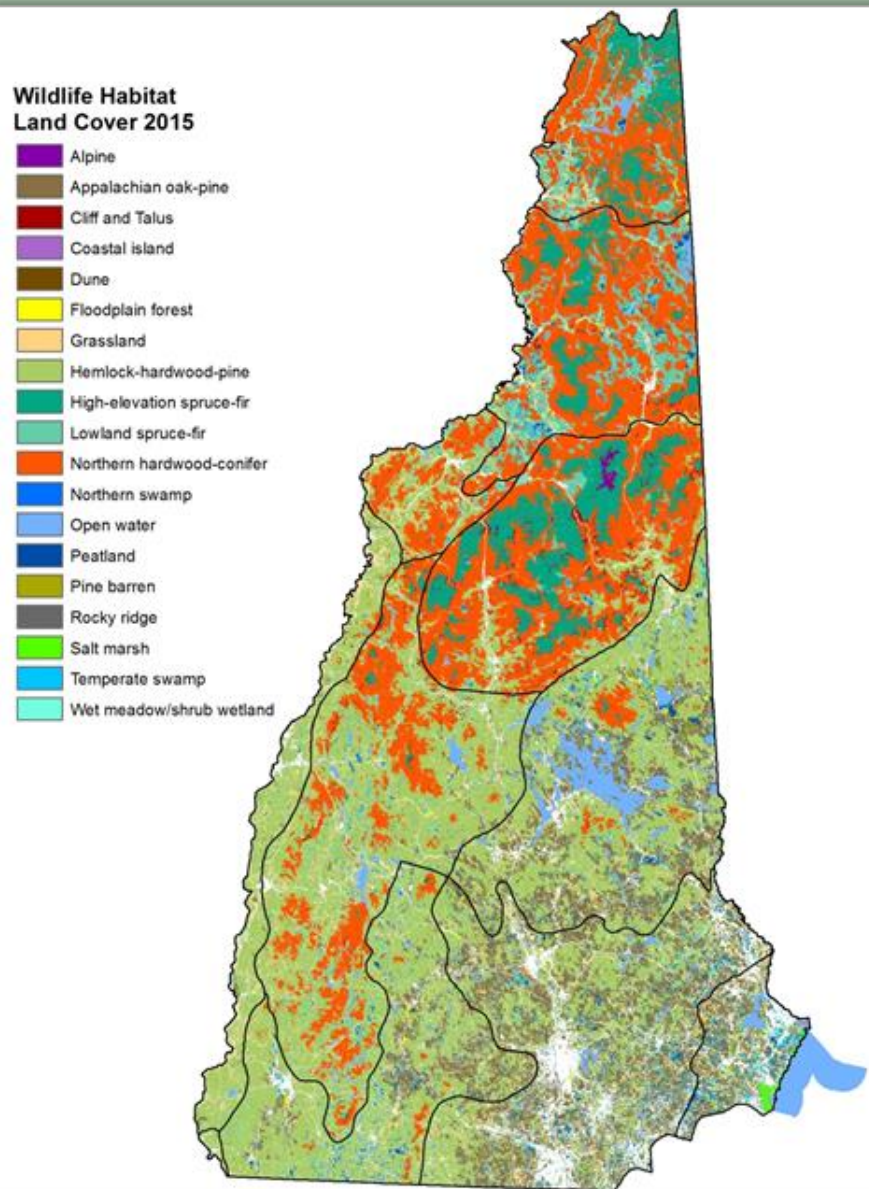
Habitat Profiles

Actions

- **Implement stormwater management** practices that filter runoff through the ground before it enters surface water.
- **Prioritize dam removal projects**
 - target dams that either fragment large networks of coldwater stream habitat or dams that create unsuitable water temperatures for coldwater species.



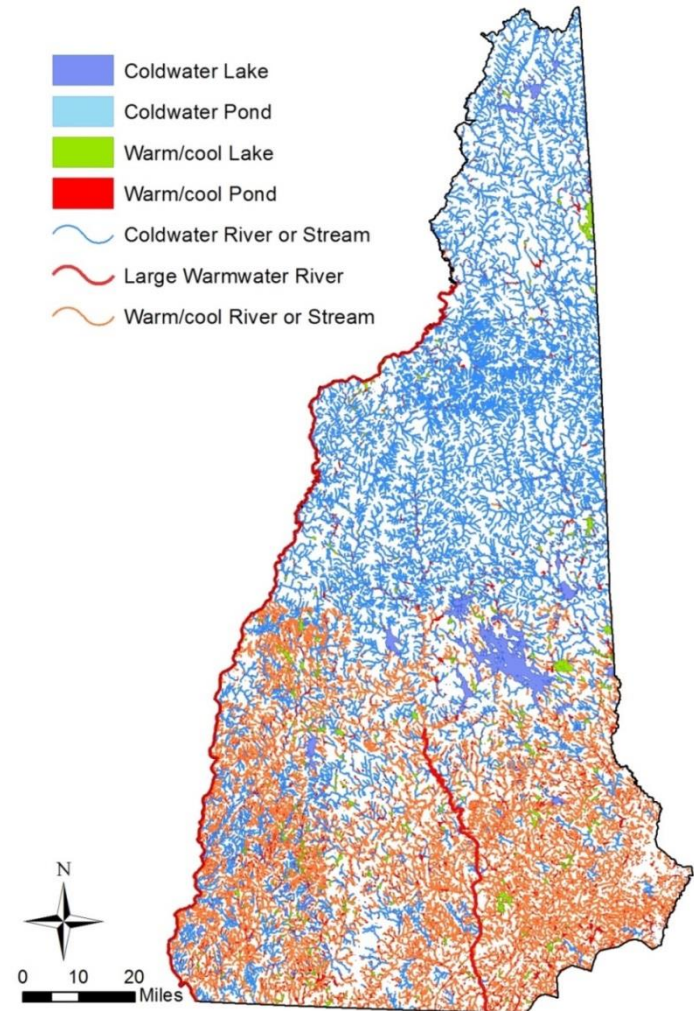
Updated Maps



Based on Regional Data

New Hampshire Data used to improve accuracy

Mapped to accuracy of $\pm \frac{1}{4}$ acre



NEW HAMPSHIRE WILDLIFE HABITAT LAND COVER 2015



Base map data provided by NH GRANIT at UNH December 2015. Intended for planning use only.

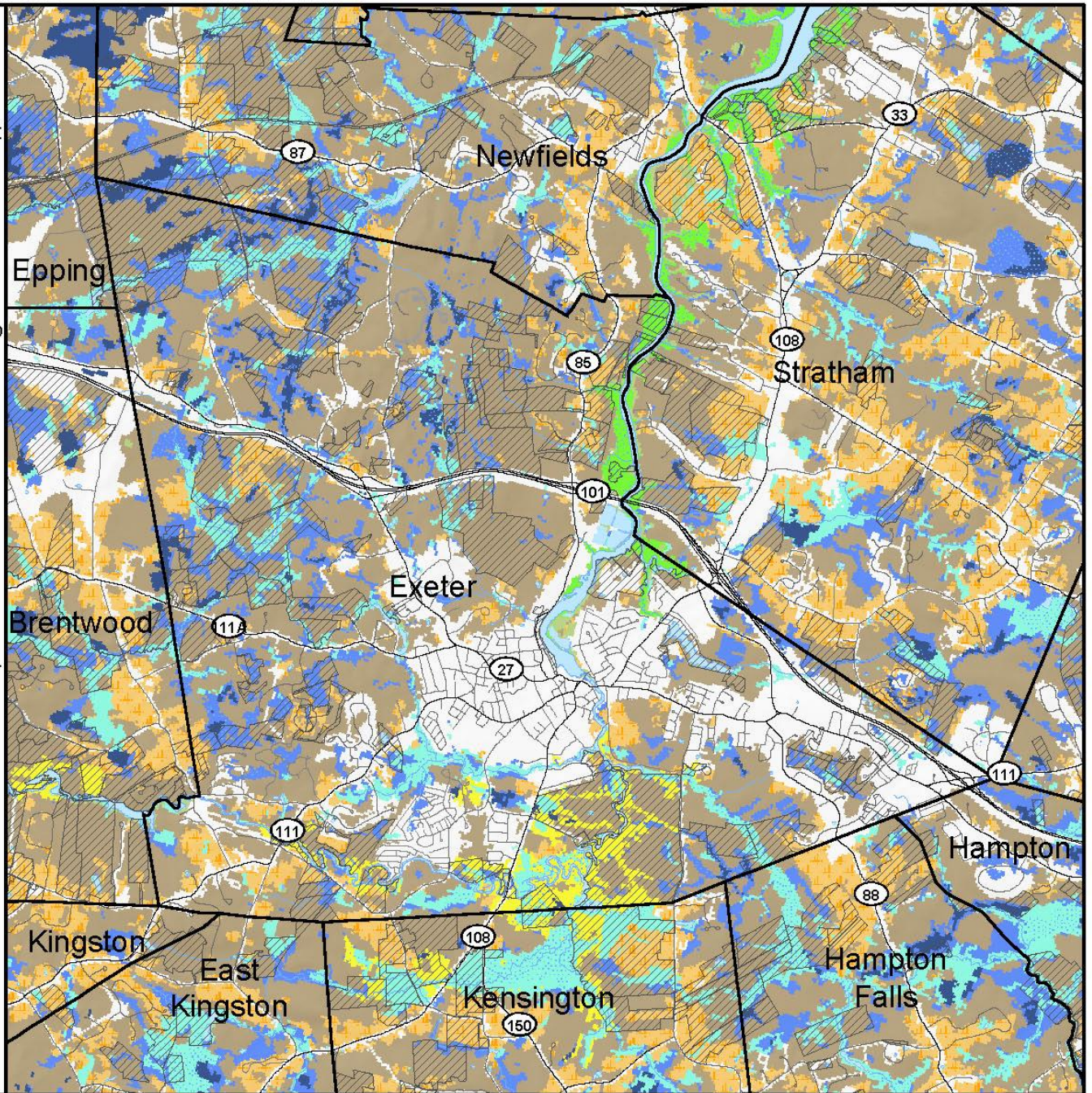


NEW HAMPSHIRE
Wildlife Action
Plan

September 2015

0 1 2 Kilometers

0 1 2 Miles

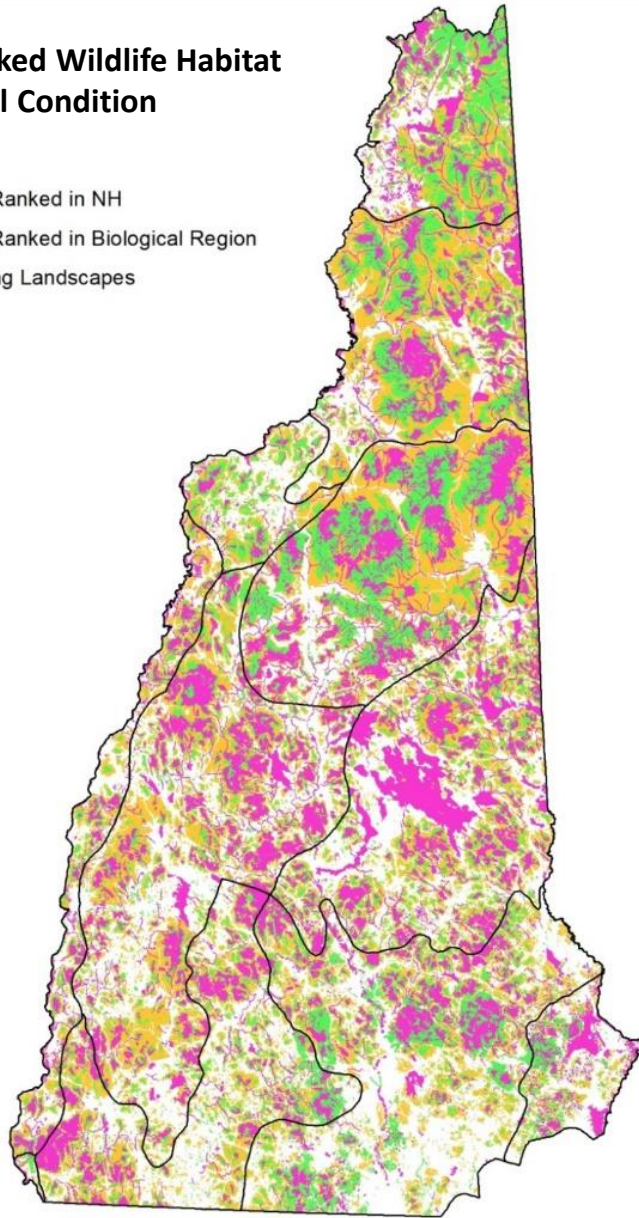


Updated Maps

Highest Ranked Wildlife Habitat by Ecological Condition

WAPTIER

- 1 Highest Ranked in NH
- 2 Highest Ranked in Biological Region
- 3 Supporting Landscapes



Biological factors

- rare plant & animal species, biodiversity

Landscape factors

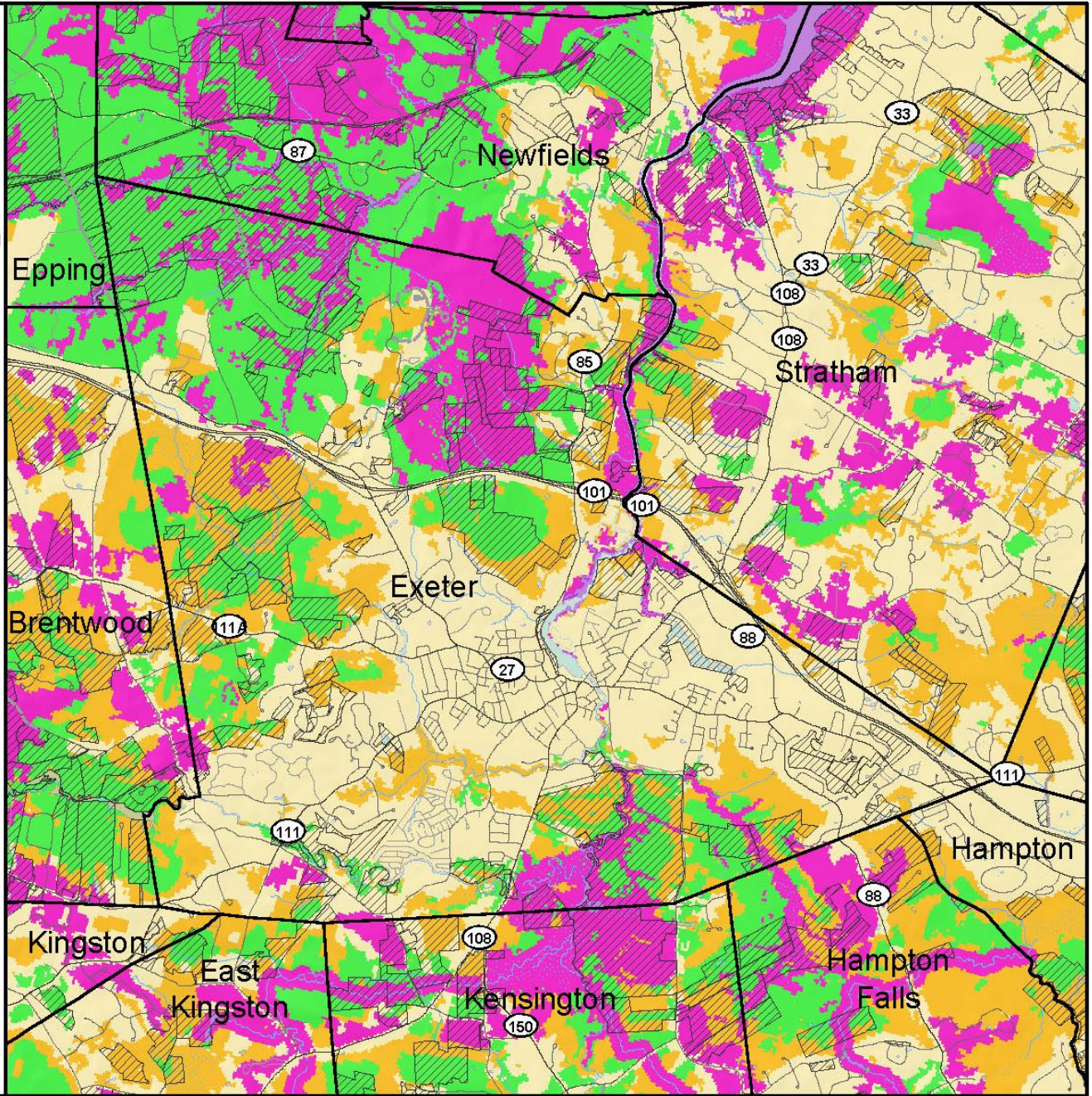
- size of habitat, proximity to other patches of that habitat

Human impact

- Effects of development, roads and utility corridors and pollutants

2015 HIGHEST RANKED WILDLIFE HABITAT BY ECOLOGICAL CONDITION

- Highest Ranked Habitat in New Hampshire
- Highest Ranked Habitat in the Biological Region
- Biological region = TNC ecoregional subsection for terrestrial habitats or Aquatic Resource
Mitigation region for wetlands and floodplain forest.
- Supporting Landscapes
- Conservation or public



Base map data provided by NH GRANIT at UNH December 2015. Intended for planning use only.



NEW HAMPSHIRE
Wildlife Action Plan
September 2015



Chapter 5: Conservation Actions!

1407. Restore or Maintain Natural Flow Regimes

- Dam Removal
- Hydropower regulation
- Protect instream flow
- Reduce the impacts of impervious surfaces
- Reduce unnatural water level fluctuations at dams



Action!

1408. Restore and Maintain Watershed Connectivity

- *Stream Crossing Surveys*

Prioritize restoration sites = Incorporate stream flow modeling (include predicted flow increases due to climate change)- this can be used to identify crossings that are vulnerable to flood damage, which are often the same crossings that restrict the movement of aquatic species.

- *Stream Crossing Replacement*

Provide additional grant funding, streamline the application process, and develop innovative, lower cost stream crossing designs that will help facilitate aquatic connectivity restoration projects - And will help be proactive instead of waiting until crossings fail.



Action!

3231. Implement Best Management Practices (BMPs) for shoreline buffers, and improve riparian buffer protection for rivers and streams

- Goals and guidelines should be created for vegetated shoreline buffers to improve habitat for wildlife and water quality, allow for flood storage, and reduce storm erosion.
- BMPs should address the timing and use of fertilizers, pesticides and riparian buffer protection in agricultural and landscaping practices.



Resources

Taking Action for WILDLIFE



A Partnership of UNH Cooperative Extension and NH Fish and Game

[E-news signup](#)

[Contact](#)

[About](#)

[Communities](#)

[Conservation Groups](#)

[Landowners](#)

[Commonly Used Resources](#)

[Stories](#)

[Actions You Can Take](#)



HOW YOU CAN TAKE ACTION

Resources to help landowners, communities, and conservation groups take action for wildlife and habitats

[Learn More](#)

1 2 3 4

Stories

[Caring for Frankestown's Conservation Lands](#)

[The Greatest Life Under the Sun: Helen](#)

Newsletter

[Wildlife Action Plan Maps - What's New?](#)

[How YOU Can Take Action](#)

[Species Spotlight: Horseshoe Crab](#)

Featured Events

[Data, Maps, Action! What's New in the 2015 Wildlife Action Plan \(Concord\)](#)

01/14/2016

Resources

Taking Action for WILDLIFE



A Partnership of UNH Cooperative Extension and NH Fish and Game

E-news signup

Contact

About

Communities

Incorporating Wildlife
Into Town Documents

Natural Resources
Inventories

Conservation Planning for
Wildlife

Land Conservation

Using Local Regulations

Managing Wildlife Habitat

Public Outreach

Community Assistance
Program

Conservation Groups

Landowners

Commonly Used Resources

Stories

Actions You Can Take

Communities



*The Taking Action for Wildlife Team can help your community take action for wildlife.
Download and complete the application form below (Word Document)*

*2016 Communities Taking
Action for Wildlife Application*

Learn what other communities have done in our new [Communities Take Action brochure!](#)


Wondering how you can work effectively with your community to develop and implement wildlife conservation projects? Learn how you can get organized by following these steps:

1. Incorporate Wildlife into Town Documents

Review your community's existing documents, e.g. natural


Taking Action for Wildlife
NEW HAMPSHIRE WILDLIFE ACTION PLAN

COMMUNITIES TAKE ACTION
FOR WILDLIFE



New Hampshire
FISH AND GAME
Connecting you to life outdoors

Guardian of the state's fish, wildlife, and marine resources.



© J.J. Henderson / Dreamstime.com

- Home
- Hunting
- Fishing
- Coastal
- Wildlife
- OHRV
- Education
- Newsroom
- About

In This Section

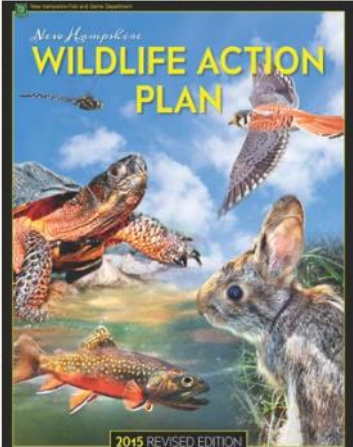
- ▶ Conservation Planning Tools
- ▶ Events
- ▶ Habitats
- ▶ Input, Planning and Updates
- ▶ Maps
- ▶ Workshops and Presentations

- ▶ Wildlife in NH
- ▶ Nongame & Endangered

NH Wildlife Action Plan


Taking Action for Wildlife!

How does NH Fish and Game and its many conservation partners around the state prioritize actions for wildlife and land management? How do you, as a member of your community and a landowner, become part of the movement to conserve and maintain New Hampshire's natural environment? The entire




New Hampshire
WILDLIFE ACTION PLAN
2015 REVISED EDITION

Conservation Planning Tools



especially for community conservation planners

Maps



NEW HAMPSHIRE WILDLIFE HABITAT LAND COVER

- Water
- Public Open or Take Areas
- Forest
- High Intensity Spruce/Fir
- Low Intensity Spruce/Fir
- Southern Hardwood Forest
- Deciduous Hardwood Forest
- Wetland
- Urban
- Other